



# THE COMPLETE PACKAGE TO LEVEL UP YOUR BUSINESS.

The 135VRT mulching tractor is the most powerful CTL on the market. The torsion suspended track drive provides a swift and durable system for work in demanding terrain. At the same time, greater visibility with all clear windows and improved loader arms with no crossbars allow for more visibility to the attachment.

## 135VRT MULCHING TRACTOR

NOTES:

Dimensions		
Specs	Standard	Metric
Overall Height	90" (7' 6")	2,286 mm
Overall Width	78" (6' 6")	1,981 mm
Overall Width with Bullhog	78" (6' 6")	1,981 mm
Overall Length	136" (11' 4")	3,454 mm
Overall Length with Bullhog	175" (14' 7")	4,445 mm
Weight	12,990 lbs	5,892 kg
Weight with Bullhog	15,616 lbs	7,083 kg
Ground Pressure with Bullhog	4.6 psi	.33 kg/cm²
Travel Speed	10 mph	16 kph
CAB Certifications	ROPS (ISO 8082), FOPS (ISO 8083) & OPS (ISO 8084)	
Performance		
Specs	Standard	Metric
Mulcher Circuit	50 gpm @ 4,061 psi	189 Lpm @ 280 Bar
Auxiliary Circuit	20 gpm @ 3,300 psi	76 Lpm @ 228 Bar
Hydraulic Tank Capacity	22 gallons	83 Liters
Attachments		
Specs		
Available Attachments	VM6020, BK7618V, VDM74, and SHX33SVM	
Mounting Style	Skid Steer Quick Attach	
Lift Style	Radial Lift Loader Arms	

ENGINE		
SPECS	STANDARD	METRIC
MAKE	Cummins QSF3.8	
DISPLACEMENT	3.8L	
CYLINDERS	4	
AFTER TREATMENT	Tier 4 Final	
MAX HORSEPOWER	132HP	98.4 kW
MAX TORQUE	360 ft*lb	488 Nm
FUEL TANK CAPACITY	52 gallons	197 Liters
DEF TANK CAPACITY	5 gallons	19 Liters
ELECTRICAL SYSTEM	12V	
BATTERY	Single 12V	
UNDERCARRIAGE		
SPECS	STANDARD	METRIC
MANUFACTURER	ASV Posi-Track	
TRACK WIDTH	20"	508 mm
ROLLER WHEELS	48 High Density Polyurethane	
GROUND CLEARANCE	15"	381 mm
FRONT AND REAR ROLLER WHEELS	15"	381 mm
MID-ROLLER	10"	254 mm

**FECON**  
FECON.COM | 800-528-3113



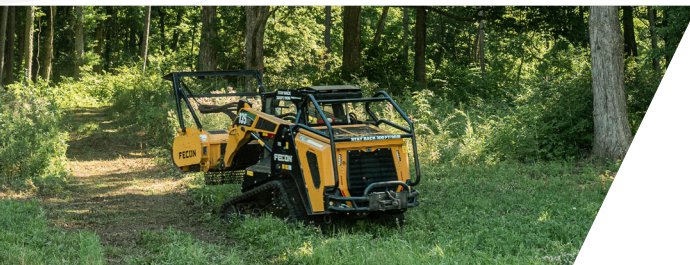




## MAX SERIES CAB

- ✓ Full forestry spec cab, 3/4" poly front door, 1/2" poly side windows
- ✓ More spacious, comfortable operator station with 8" color display
- ✓ Great visibility with all clear windows and doors and improved loader arm with no cross bars allowing for more visibility to the attachment

VM6020 & BK7618V  
MULCHING ATTACHMENTS  
AVAILABLE



## THE MOST POWERFUL CTL ON THE MARKET

- ✓ 132hp 3.8L Cummins Tier 4 Final Engine, a 10% increase over the Fecon 125VRT
- ✓ 50GPM auxiliary attachment flow providing 119hp to the Bull Hog Mulcher or other attachments



20" RUBBER TRACK  
MACHINE



## IMPROVED DURABILITY & SERVICEABILITY

- ✓ Hinged belly pans and tilting cooler and condenser guards for easy cleaning of the machine
- ✓ Sealed fuse panels and improved wiring harness routing
- ✓ Counterweight integrates rear bumper with rear track guarding

AVAILABLE INTEGRATED  
WINCH



## LARGER FUEL CAPACITY

- ✓ 52-gallon fuel tank for nearly double run time between fill-ups
- ✓ Full coverage fuel tank guarding with improved sealing to prevent debris ingestion

# A TRUE **WOODS-WORTHY** MULCHING MACHINE.

The Fecon 135VRT comes standard with all steel hoods for greater in-woods durability with material shedding design, standard cage guard and limb risers.



WATCH IT IN  
ACTION >

